



Follow us on Facebook!



2021-2022 Season

Southeast Kansas *Symphony* at Pittsburg State University

As the SEK Symphony returns to live performances, Music Director Raúl Munguía leads a season that includes immortal masterworks, distinguished guest artists, conductors, and much more. Come to the symphony and be inspired.

Tickets are \$15 for adults, \$12 for seniors, and \$5 for children and retired PSU employees. Current PSU students, faculty, and staff, with valid PSU ID, are entitled to free tickets. They may be picked up in person at the PSU Ticket Office or the night of the concert.

Tickets for the Aubrey Logan concert are \$25 for adults, \$23 for children and seniors, \$20 for faculty and staff, and \$13 for PSU students.

Tickets can be purchased online, over the phone, or in person from the PSU Ticket Office in the Garfield Weede Building.

pittstate.edu/office/ticket-office
620-235-4796

Southeast Kansas *Symphony* at Pittsburg State University



“Welcome back to live music at the Bicknell. I am thrilled to share with you the enjoyment of live symphonic music with these ambitious and diverse musical offerings: from Prokofiev’s *Romeo & Juliet*, Lilly Bullanger’s *D’un soir triste*, Tchaikovsky’s *Piano Concerto No.1*, to holiday and much more casual outdoor selections, we promise you will witness the best live music in the area.”

— Raúl Munguía, Director

From Russia with Love
October 17, 2021 - 3:00 p.m.
Bicknell Family Center for the Arts

The SEK Symphony welcomes Russian conductor Vladimir Gorbik, Senior Assistant Professor at the Tchaikovsky Moscow State Conservatory, and Italian pianist Luigi Borzillo. In addition, the orchestra will be joined by the University Choirs and we also welcome back musicians from Latin America as part of the Music Department's international outreach service. "We are ecstatic to welcome you back, and there's no better way to celebrate the return of live performances than with a full Russian program, a tour-de-force repertoire showcasing every section of the orchestra," Raúl Munguía, Director.



Luigi Borzillo, Pianist

2021-2022 Concert Season

- Oct. 17 From Russia with Love
- Dec. 2 Holiday Extravaganza
- Feb. 4 Future Stars
- March 26 Aubrey Logan with the Southeast Kansas Symphony
- April 10 2nd Annual Outdoor Concert



AUBREY LOGAN

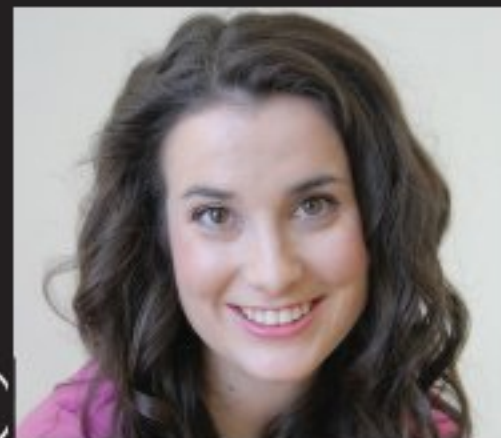
Aubrey Logan with the Southeast Kansas Symphony
March 26, 2022- 7:00 p.m.
Bicknell Family Center for the Arts

Aubrey Logan brings stunning vocals, superb trombone skills, and her signature humor to the Bicknell Center for a one-night performance joined by the Southeast Kansas Symphony.

Bringing the world to Pittsburg

Holiday Extravaganza
December 2, 2021- 7:00 p.m.
Bicknell Family Center for the Arts

One of Pittsburg's favorite musical holiday celebrations returns to the Bicknell Center! The SEK Symphony and special guests share the music of the holiday season in this festive program for the whole family. We welcome our newly appointed professor of voice, Lydia Bechtel-Edmonson.



Lydia Bechtel-Edmonson, Voice Professor & Guest Performer



Future Stars
February 4, 2022- 7:00 p.m.
Bicknell Family Center for the Arts

The SEK Symphony will be joined by the PSU Music Department's winners of the annual Concerto/Aria Competition. Senior, Madison Westervelt, soprano & Junior, Steven Fayne Speer, timpani will be featured. The orchestra will perform D'un soir triste by Lili Boulanger.

2nd Annual Outdoor Concert
April 5, 2022- 5:00 p.m.
McCray Hall South Lawn

Enjoy the warm spring afternoon of April 10 with our 2nd annual McCray Hall Outdoor Concert. Bring your favorite lawn chair, pack a picnic dinner, and immerse yourself in an evening of popular classics.

