

Checklist
KID
Ed. 6.7789:
y1
c-2
-165686



Music Notes

A Publication of Pittsburg State University Department of Music

Vol. 1, No. 1

Fall, 1985

PSU Music Notes: The Inaugural Issue

Pittsburg State University's Department of Music is pleased to present the inaugural issue of a new publication entitled "PSU Music Notes." The result of many months of planning, this newsletter will serve as a primary vehicle for communication with alumni and friends of the department.

Plans call for publication three times yearly, according to the following schedule; November, March, and July. Included in each issue will be material such as alumni news, a calendar of events, a special focus on faculty members, and current information on other aspects of our program.

In thinking about an appropriate cover design for "PSU Music Notes," the decision was made to look to our own building for ideas. McCray Hall has served the department beautifully since its completion in 1930, and it continues to be one of the most attractive facilities on campus. One striking feature of McCray Hall of which we've always been very proud is the beautiful lobby area. Whether being used for a concert, a reception, or just a comfortable place to congregate, McCray Lobby makes a favorable, and lasting, impression. It seemed quite natural, therefore, to incorporate some aspect of this area into our design. The drawings in the upper corners of this page were, in fact, made from rubbings of one of the decorative tiles in the walls of McCray Lobby. We wish to extend special thanks to Mike Hailey, Director of Publications at Pittsburg State, and student assistant Wendy Greenwood for their assistance in creating this cover.

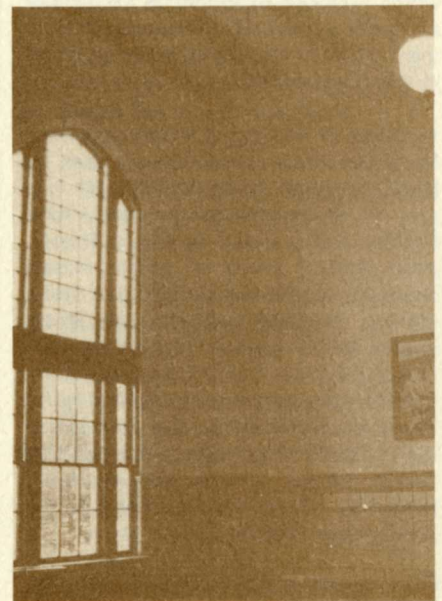
As a significant portion of "PSU Music Notes" will be devoted to news of alumni, we encourage anyone with such information to submit it for inclusion in the next available issue. Please feel free to send us clippings, reviews, announcements of appointments, changes of address, or any other news of a personal or professional nature. We would also welcome comments and/or suggestions concerning this publication. Please address all such correspondence to:

Susan Marchant, Editor
PSU Music Notes
Department of Music
Pittsburg State University
Pittsburg, Kansas 66762

As alumni and friends of this department, you are already well aware of its distinguished history and service to the region. You will be pleased to know that this strong tradition is being maintained and that careful plans are being made to ensure that the excellence will continue into the future. Subsequent issues of "PSU Music Notes" will outline various aspects of a long-range plan designed to meet the challenges which lie ahead.

Reminder

Music Alumni and Participants who have received an update form are urged to return it as soon as possible.



McCray Lobby

GREETINGS FROM DEAN WELTY

I am happy to be able to bring you greetings from the College of Arts and Sciences. We are very proud of our Music Department and its alumni. We are always anxious to hear of your accomplishments, and we hope you will have the opportunity to visit the campus and the department often during this school year. A number of exciting music events are planned and we hope you will be able to attend many of these. We are glad to welcome the Department Chairperson, Dr. Gene Vollen, back from a year-long sabbatical. During his absence the department was ably administered by Dr. Susan Marchant, Assistant Professor of Organ.

Dr. Richard Welty, Dean
College of Arts and Sciences

